



> texture



> expression



## Kelly O'Neal

Kelly O'Neal began her career by producing one-of-a-kind hats and apparel with rare and antique Asian fabrics that found their way into several popular television shows and adorned both pop stars and movie actors. Her transition from three-dimensional artistic pieces to two-dimensional drawing and painting began in the mid-1990s. Since then, her work has been shaped by diverse influences, including iconic women's accessories in contemporary pop culture, traditional forms of Japanese figurative woodcuts, medieval French architectural details, the emotionally-charged colors of Mexico and, most recently, the richness and abundance of Africa's animals and foliage. Her paintings have been exhibited in the United States, Canada, France, and Switzerland. She was educated at Toronto's OCAD University.

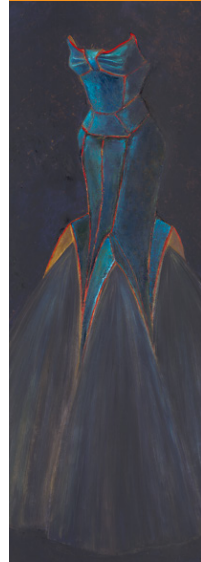
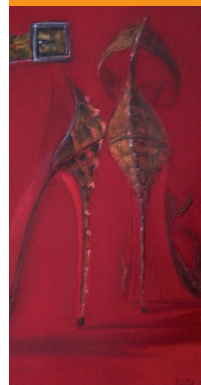
## Artist Statement

For me, art manifests from the questions we ask ourselves, the struggles we face, the sacrifices we make, and the materials we are seduced by. My aim in creating my paintings is for my viewer to sit back, in a comfortable chair, smile while gazing at my work, and imagine who? I do not view my shoes and dresses as being inanimate objects, but as portraits. Portraits with mystery: who is the person behind the scene? The viewer of my painting engages his or her own imagination. Once that is achieved, the process is complete – the portrait is intimate; the painting is finished.

150 Chestnut Street, 3rd Floor, Providence, RI 02903  
401 641 5182, [michele@artprovgallery.com](mailto:michele@artprovgallery.com), [ArtProvGallery.com](http://ArtProvGallery.com)

## HOURS

Wednesday – Friday, 11am-2pm  
Evening and weekend appointments welcome



## Kelly O'Neal

### Education

Study with N.Y. Artist Patricia Terrell  
France – Summer, 2001-2005  
Merida, Mexico – Winter, 2009-2013

Ontario College of Art and Design, Toronto, Canada  
Diploma in Drawing and Painting – 1998-2001  
General Design – 1984-1987

York University, Toronto, Canada  
Liberal Arts – 1982-1984

### Exhibitions

*Individu Elle*, Solo show, Halde Gallery,  
Widen, Switzerland – 2015

*MEGA 2014 Art Fair*, Group show, Halde Gallery,  
Widen, Switzerland – 2014

*Winterzauber*, 3 Person Show, Halde Gallery,  
Widen, Switzerland – 2013

*Advent*, Group show, Halde Gallery,  
Widen, Switzerland – 2013

*Ali Cavanaugh and Kelly O'Neal Exhibition*,  
2 Person Show, Sarah Bain Gallery,  
Brea, California – 2012

*Einladung zur Jubiläums-Ausstellung*, Group show,  
Halde Gallery, Widen, Switzerland – 2012

*Advent*, Group show, Halde Gallery,  
Widen, Switzerland – 2011

*Small Works*, Group show, Sarah Bain Gallery,  
Anaheim, California – 2010

*Einladung*, Group show, Halde Gallery,  
Widen, Switzerland – 2009

*Area Artist Collection*, Albright-Knox Collectors Gallery,  
Buffalo, New York – 2009

*Advent*, Group show, Halde Gallery,  
Widen, Switzerland – 2008

*Highheels*, Solo exhibition, Halde Gallery,  
Widen, Switzerland – 2008

*Balboa Bay Club Art Exhibition*, Group show,  
New Port Beach, California – 2008

*Area Artist Collection*, Albright-Knox Collectors Gallery,  
Buffalo, New York – 2008

*Einladung*, Group show, Halde Gallery,  
Widen, Switzerland – 2008

*Small Works*, Group show, Sarah Bain Gallery,  
Anaheim, California – 2007

*Area Artist Collection*, Albright-Knox Collectors Gallery,  
Buffalo, New York – 2007

*Einladung*, Group show, Halde Gallery,  
Widen, Switzerland – 2007

*Advent*, Group show, Halde Gallery,  
Widen, Switzerland – 2006

*Small Works*, Group show, Sarah Bain Gallery,  
Anaheim, California – 2006

*Selected Works V*, Albright-Knox Gallery,  
Buffalo, New York – 2006

*Summer Art Exhibit*, Group show curated  
by Studio Gallery, Bistango Gallery, Restaurant,  
Irvine, California – 2006

*Area Artist Collection*, Albright-Knox Collectors Gallery,  
Buffalo, New York – 2006

*About Love*, Group show, Lonsdale Gallery,  
Toronto, Canada – 2005

*What's Your Pleasure?*, Solo show,  
Sarah Bain Gallery, Brea, California – 2005

*Area Artist Collection*, Albright-Knox Collectors Gallery,  
Buffalo, New York – 2005

*Many Faces of Vanity*, Solo show, Albright-Knox  
Collectors Gallery, Buffalo, New York – 2005

*Small Works*, Group show, Sarah Bain Gallery,  
Brea, California – 2004

*Worship*, Ontario Society of Artists' 130th  
Open Juried Exhibition, J.B. Aird Gallery,  
Toronto, Canada – 2004

*Separate Visions*, 3 Person Show, Sarah Bain Gallery,  
Brea, California – 2004

*Area Artist Collection*, Albright-Knox Collectors Gallery,  
Buffalo, New York – 2004

*Weapons of Mass Attraction*, Two Person Show,  
401 Gallery, Toronto – 2004

*5th Annual Juried Drawing Exhibition*,  
John B. Aird Gallery, Queen's Park, Toronto – 2004

*About Love: 2nd Annual Juried Miniature Competition  
and Fundraiser*, Lonsdale Gallery, Toronto – 2003

*Selected Works II*, Albright-Knox Collectors Gallery,  
Buffalo, New York – 2003

*Area Artists Collection*, Albright-Knox Gallery,  
Buffalo, New York – 2003

*CakeWalk*, 2 Person Show, 401 Gallery, Toronto – 2003

*Area Artists Collection*, Albright-Knox Gallery,  
Buffalo, New York – 2002

### Representation

Albright-Knox Collectors Gallery,  
1285 Elmwood Avenue, Buffalo, New York

Halde Gallery, 24 Haldenstrasse, Widen, Switzerland  
Izzy, 402 Spadina Road, Toronto, Canada

Sarah Bain Gallery, Birch Street Promenade,  
Brea, California, United States

**ArtProv**  
gallery

[ArtProvGallery.com](http://ArtProvGallery.com)