



> texture



> expression



## Serena Lafond

I aim to explore the human condition through the exchange of methods and materials. Through the reconciling of micro-expressions and materiality of paint, I look to deconstruct and reconstruct the figure. My process grows out of conversations with the people around me and our discussions revolve around the poignant phenomenon associated with reality. With my camera continuously firing, the photographs become the springboard of my drawings and paintings.

In my research, I give shape to complex psychological relationships. I find myself drawn to the ephemeral characteristics of charcoal and the sempiternal nature of oil paint. Each of these materials provides a different vehicle for analysis.

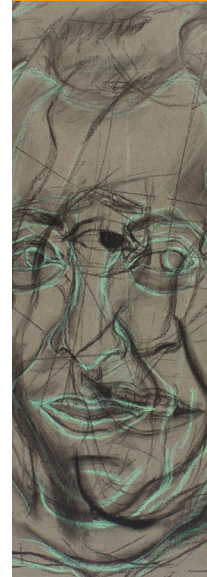
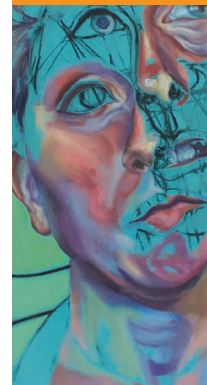
My background in representation both haunts and teases my imagination. I have reached a point where it has started to open new paths for communicating. I intend to explore these possibilities by being uninhibited in my response to material and allowing for expressiveness to take hold. Through my work, I have begun to realize the profound impact of nonverbal communication and the role it plays in deciphering the human condition.

*"I find myself drawn to the ephemeral characteristics of charcoal and the sempiternal nature of oil paint."*

150 Chestnut Street, 3rd Floor, Providence, RI 02903  
401 641 5182, [michele@artprovgallery.com](mailto:michele@artprovgallery.com), [ArtProvGallery.com](http://ArtProvGallery.com)

### HOURS

Check website for weekly hours



## Serena Lafond

### Biography

Serena was born and raised in Rhode Island. Her mediums are predominantly oil paint and charcoal. She graduated cum laude with a Bachelor of Arts degree in Psychology and Studio Art from Salve Regina University. Over her time in college, her artwork began to integrate her two majors. Her current work revolves around micro-expressions and the transition between emotions. Last year, Serena completed a four-week residency at the Vermont Studio Center in Johnson, VT. She has received the William Varieka Fine Arts Ltd. Award for Arts and Public Policy and Honorable Mention from the Warwick Museum of Art. She has participated in group exhibitions at the Warwick Museum of Art, RI; Limner Gallery, NY; and Hallspace, MA.

### Education

Salve Regina University, Newport, RI, BA, Double Major in Studio Art, Painting and Psychology, cum laude, Pell Honors Program – 2016

American University of Rome, Rome, Italy, Summer session abroad, Studied Art History and the Italian language – 2013

### Exhibitions

*Museum of Goodbye*, Creativity Caravan, Montclair, NJ – 2017

*Strange Figurations*, Limner Gallery, Hudson, NY – 2016

*Drawing Project*, Hallspace, Boston, MA

*Mind, Body & Soul*, Warwick Museum of Art, Warwick, RI – 2016

*Senior Honors Thesis Exhibition*, Dorrance H. Hamilton Gallery, Salve Regina University, Newport, RI – 2016

*Juried Senior Show*, Dorrance H. Hamilton Gallery, Salve Regina University, Newport, RI – 2016

*Juried BOSS Show (Best of Salve Students)*, Dorrance H. Hamilton Gallery, Salve Regina University, Newport, RI – 2013-2015

### Collaborative Projects

*Multicultural Mural*, Center for Student Development, Salve Regina University, Newport, RI – 2014

### Honors and Awards

Artist-in-Residence, Vermont Studio Center, Johnson, VT – 2017

Artist Grant, Vermont Studio Center, Johnson, VT – 2017

William Varieka, Fine Arts Ltd. Award for Arts and Public Policy, Varieka Gallery, Newport, RI – 2016

Honorable Mention, Warwick Museum of Art, Warwick, RI – 2016

### Bibliography

Jones, Lily: "Pushing Boundaries," Report from *Newport*, Vol. 43, No. 1 Summer 2016, p. 11 – 2016